

Reproduction and Development Worksheet

Name _____ Date _____ ~~Region~~

Read what is in the boxes. Then use the pictures to answer the questions that follow.

Our bodies are adapted for reproduction.

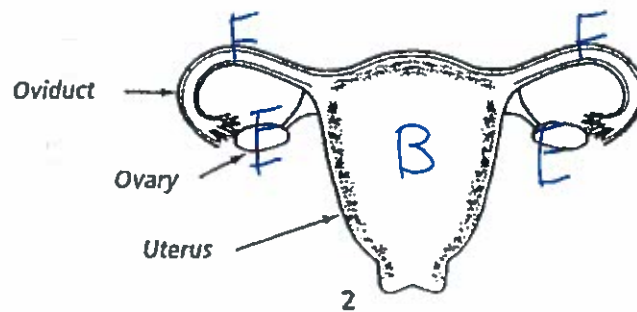
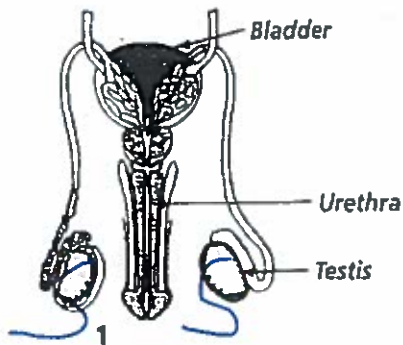
In a man, this means that:

1. sperm is produced.
2. sperm passes to the female body where it can fertilize an egg.

In a woman, this means that:

1. eggs are produced in her ovaries.
2. eggs are fertilized in her oviducts.
3. the fertilized egg is protected and nourished while it develops into a fetus.
4. the reproductive process delivers a fully developed baby.

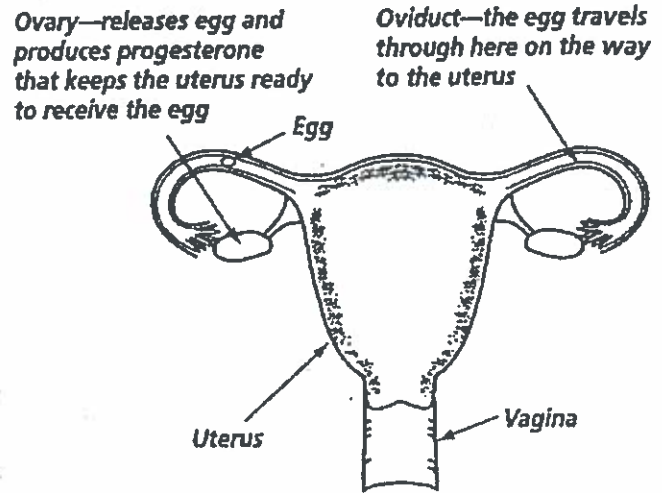
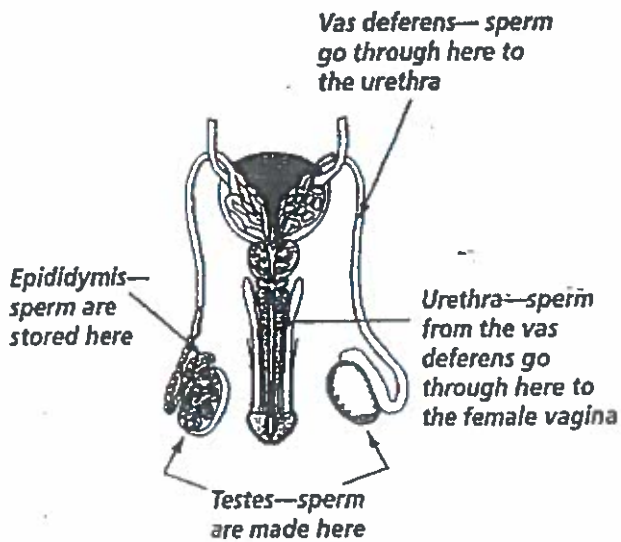
Hormones, including testosterone and estrogen, are the messengers that tell the different parts of the body what to do. In addition to controlling many body functions, they play a large role in reproduction.



1. Which picture shows the male reproductive system? 1
2. Write S on the picture where sperm are made.
3. Write E on the picture where the eggs are made.
4. Write F on the picture where fertilization takes place.
5. Write B on the picture where the fertilized egg develops into a fetus.

Reproduction and Development Worksheet

Study the diagram. Then fill in the blanks in the statements that follow.



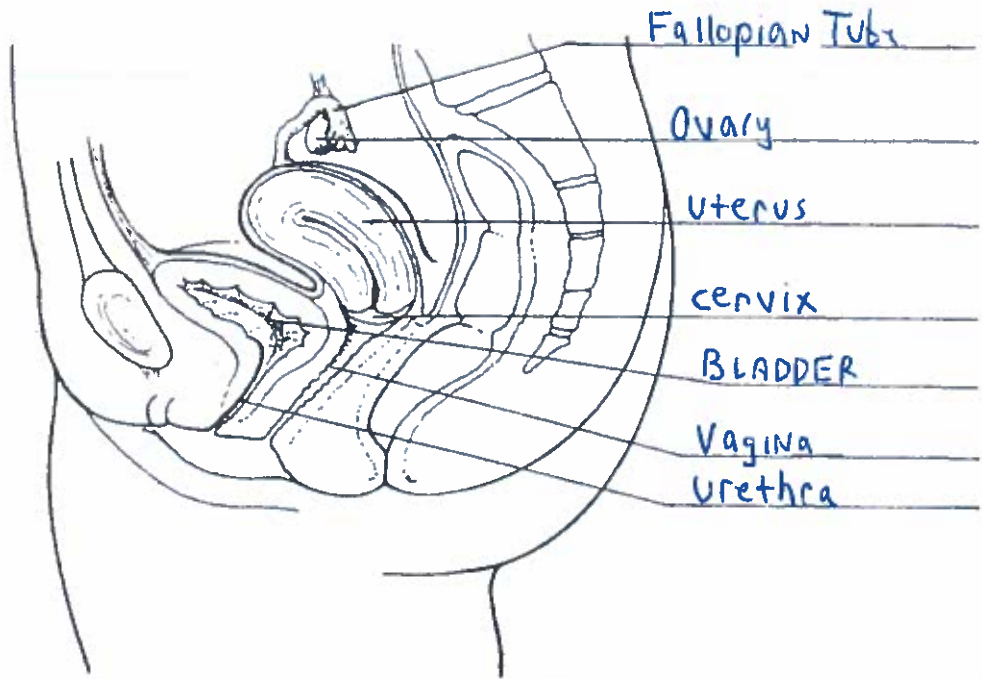
1. The egg travels down the OVIDUCT (Fallopian Tube) to the uterus.
2. Sperm are made in the testes and stored in the Epididymis.
3. Sperm are deposited in the vagina. To get to the vagina from the epididymis, the sperm first go through the VAS DEFERENS and then through the URETHRA.
4. The ovary produces the hormone progesterone. Progesterone keeps the UTERUS ready to receive a fertilized egg.

THE FEMALE REPRODUCTIVE SYSTEM

NAME _____

Label the parts of the female reproductive system on the diagram.

- a. ovary - makes hormones / releases egg
- b. uterus - holds baby
- c. urinary bladder - holds urine
- d. urethra - conducts urine
- e. vagina - intercourse! / birth canal



THE MALE REPRODUCTIVE SYSTEM

NAME _____

Label the parts of the male reproductive system on the diagram below

- a. urinary bladder - holds urine
- b. prostate gland - produces semen
- c. urethra - conducts urine
- d. penis - intercourse! / urination
- e. vas deferens - conducts sperm
- f. scrotum - pouch holds testicles
- g. testis - makes sperm, makes hormones
- h. Cowper's gland - produces fluid
- i. seminal vesicle - produces semen
- j. epididymis - stores sperm

